

# House & Land

# One Tree Point



📍 25 Te Piriti Road, The Landing,  
One Tree Point

FROM \$1,086,565

Located in the idyllic seaside town of One Tree Point, this property boasts a perfect north-eastern aspect, giving ample opportunity to bask in the sun and indulge in outdoor living. Enjoy epic views of Mount Manaia and the close proximity to magnificent east coast beaches.

 **Platinum  
Homes**  
*Everything You Call Home*

# Floorplan Clevedon

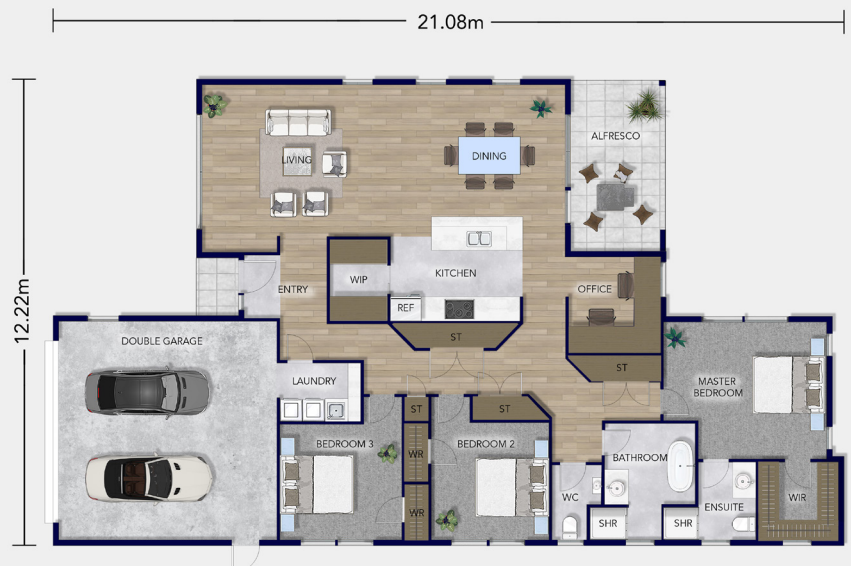
Further elevate your living experience with our stunning single level open-plan design. At 194 sqm featuring impressive, raked ceilings and large gable windows, this large, light-filled home is a perfect example of modern urban-style, boasting a smart design and a flawless finish.

The centrepiece and social hub here, is the open-plan kitchen with a walk-in pantry and central island that connects seamlessly to the dining, living, and alfresco entertaining areas.

Thoughtfully designed, this home features three double bedrooms, with a generous master incorporating an exquisite ensuite, and walk-in wardrobe. The rest of the household is served by a modern family bathroom, and a separate toilet.

With easy access to main roads, boat clubs, One Tree Point School, and an upcoming shopping centre, this property is an excellent choice for buyers looking for a modern and elegant home in a highly sought-after neighbourhood.

\*Concept pricing only. Price is subject to change based on specifications and inclusions. Price variants may occur across regions based on supply.



Total Floor (m2) 194



1



3



2



2



2

Love this home? Get in touch

**Jette de Jong**

New Home Consultant

021 359 947

[jette.dejong@platinumhomes.co.nz](mailto:jette.dejong@platinumhomes.co.nz)

 **Platinum  
Homes**

Dimensions, images and floorplan are indicative only — not to scale.

Floorplan ©2021 Platinum Homes NZ Ltd — not to be reproduced without permission of the copyright holder.