

# House & Land Whangarei



📍 Lot 5, The James, 115 Three  
Mile Bush Road

FROM \$1,258,912

The James is an exciting new single-stage residential subdivision located at Three Mile Bush Road, Whangarei, Northland, offering a unique lifestyle opportunity for those looking to build their dream home.

 **Platinum  
Homes**  
*Everything You Call Home*

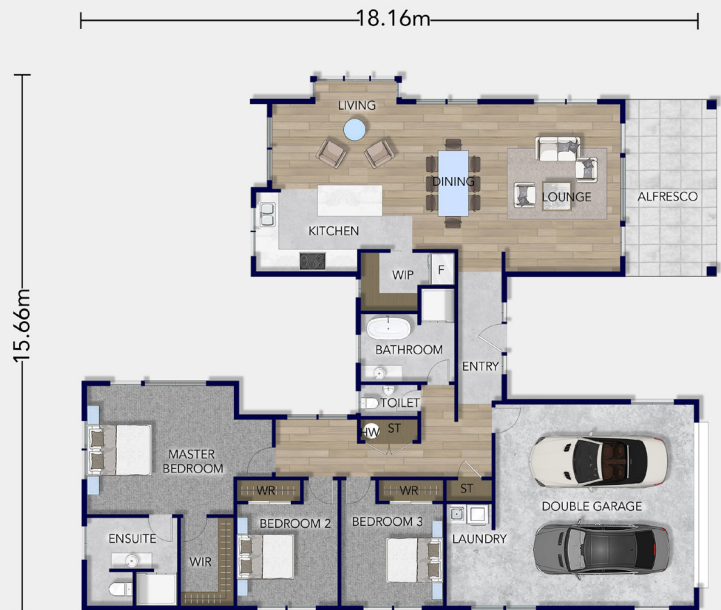
# Floorplan Papamoa

Just 7km from Whangarei and a short drive to the centre of Kamo, this is a vibrant community in an ideal location to live and raise your family.

Our Papamoa plan works perfectly on this 622 sqm flat section. This stunning modern family home boasts an urban style design spanning 195 sqm. Its H-shaped floorplan features raked ceilings in the open-plan living, kitchen, and dining areas, accentuated by spacious gable windows. The large alfresco area is perfect for entertaining or basking in the sun.

Loaded with luxe features you'll be impressed by the natural flow of this home which achieves the right measure of separation and privacy. The three double bedrooms include a spacious master with a generous-sized walk-in wardrobe and elegantly appointed ensuite. The family bathroom features a bath and shower with a separate toilet, and the laundry is located discreetly in the large double garage.

\*Concept pricing only. Price is subject to change based on specifications and inclusions. Price variants may occur across regions based on supply.



Total Floor (m2) 195



1



3



2



2



2

Love this home? Get in touch

Jette de Jong

New Home Consultant

021 359 947

[jette.dejong@platinumhomes.co.nz](mailto:jette.dejong@platinumhomes.co.nz)

 **Platinum  
Homes**

Dimensions, images and floorplan are indicative only — not to scale.

Floorplan ©2021 Platinum Homes NZ Ltd — not to be reproduced without permission of the copyright holder.