

# House & Land Waikato



 CAMBRIDGE

FROM \$1,150,000

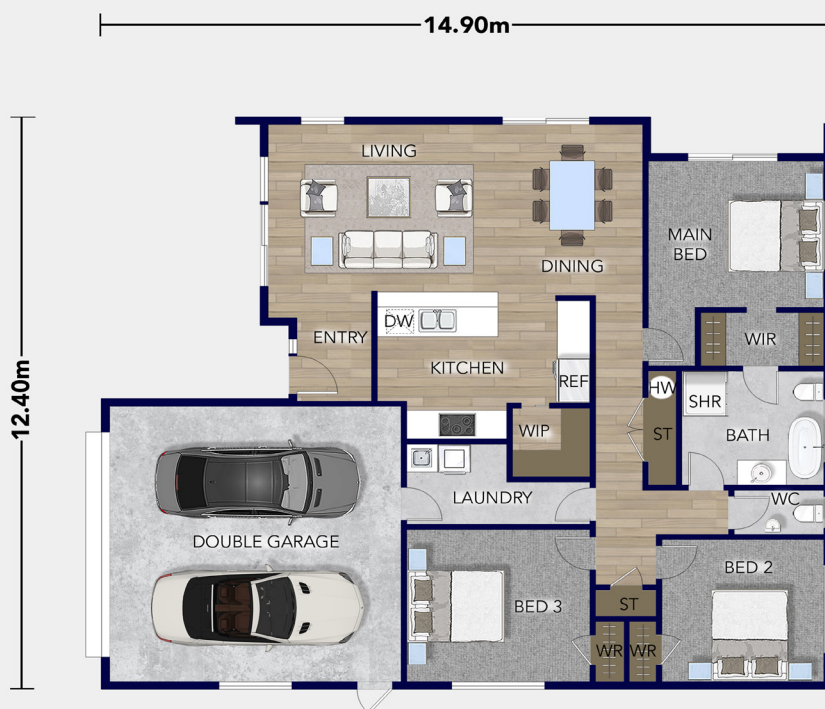
The Platinum Homes Pauanui plan is worth investigating. An urban style design with a monopitch roof and stylish raked ceilings, there's nothing you won't love about this home!

 **Platinum  
Homes**  
*Everything You Call Home*

# Floorplan Pauanui

At 164sqm this compact modern home is cleverly designed. The open plan kitchen complete with a walk-in pantry connects beautifully with the dining and living areas which is great for family living and entertaining.

The plan features three spacious bedrooms including a master with a walk-in wardrobe and semi-ensuite, plus there's plenty of storage and a separate walk-through laundry that leads to a double garage.



Total Floor (m2) 164



1



3



2



1



2

Love this home? Get in touch

**Brad Wheeler**

Licensee

027 687 8171

[brad.wheeler@platinumhomes.co.nz](mailto:brad.wheeler@platinumhomes.co.nz)

**Angela Wheeler**

Licensee

027 687 8177

[angela.wheeler@platinumhomes.co.nz](mailto:angela.wheeler@platinumhomes.co.nz)

**Platinum  
Homes**

Dimensions, images and floorplan are indicative only — not to scale.

Floorplan ©2021 Platinum Homes NZ Ltd — not to be reproduced without permission of the copyright holder.