

MANUKA

■ Platinum Plan Series



Everything Kiwis call home



MANUKA



DESIGN OVERVIEW

Floor Size (m²) **229**



APPROXIMATE ROOM SIZES (m)

FAMILY / DINING	7.2 x 3.9	MASTER SUITE*	4.1 x 3.9
THEATRE	3.8 x 4.1	BEDROOM 2	3.4 x 3.2
GARAGE	5.9 x 5.9	BEDROOM 3	3.1 x 3.1
OFFICE	2.4 x 2.7		

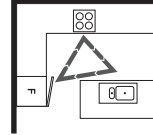
* Size excludes ensuite and walk-in wardrobe

LAYOUT OVERVIEW

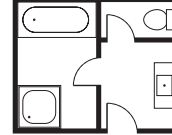
Home Layout:
Central



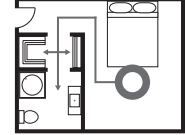
Kitchen Layout:
L shape integrated



Bath Layout:
Three way

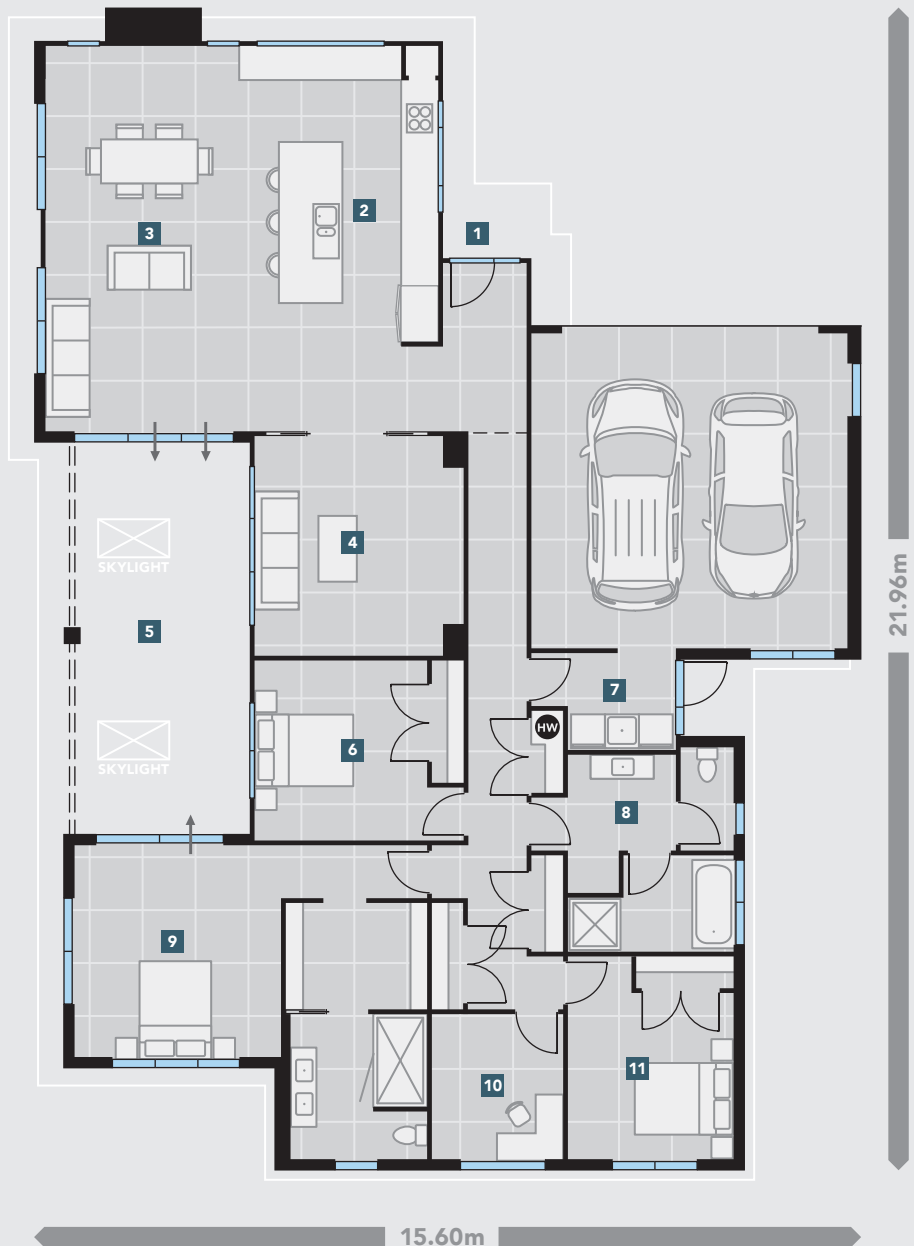


Ensuite Layout:
Walk through



AROUND THE HOME:

- 1 MAIN ENTRY:** A covered main entry provides a mid-winter dry-zone—plus makes a statement in style. The interior entry area features a high-raked ceiling to increase the sense of space.
- 2 KITCHEN:** The kitchen design uses an L shape with island bench layout—easy access and very practical!
- 3 DINING / LIVING:** Multiple living zones that are separate from each other to ensure a private space for everyone.
- 4 THEATRE:** The inclusion of a home theatre creates the perfect evening retreat to enjoy those block-busters in style!
- 5 ALFRESCO:** This home features an outdoor, under cover alfresco area with skylights to provide light all year round. Doors off living zones provide great indoor/outdoor flow.
- 6 BEDROOM TWO:** Spacious bedroom with built-in storage / wardrobe.
- 7 LAUNDRY:** A separate laundry provides practicality with handy outdoor access.
- 8 MAIN BATHROOM:** The bathroom design uses a three-way layout in which the bath and shower, toilet suite and vanity sit in separate interconnecting rooms. Practical for a family that shares the space.
- 9 MASTER SUITE:** The master suite uses a walk-through layout with the ensuite accessed via the walk-through wardrobe running off the sleeping zone.
- 10 OFFICE:** The convenience of an office (or convert to a store room).
- 11 BEDROOM THREE:** Spacious bedroom with built-in storage / wardrobe.



Dimensions, images and floorplan are indicative only — not to scale. Floorplan ©2018 Platinum Homes NZ Ltd — not to be reproduced without permission of the copyright holder.