

NORFOLK

□ Platinum Plan Series



Everything Kiwis call home



NORFOLK



DESIGN OVERVIEW

Floor Size (m²) **180**



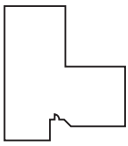
APPROXIMATE ROOM SIZES (m)

DINING/FAMILY	4.4 x 3.9	MASTER SUITE*	3.5 x 4.2
LOUNGE	5.2 x 5.1	BEDROOM 2	2.8 x 3.0
GARAGE	5.9 x 6.1	BEDROOM 3	3.8 x 2.9

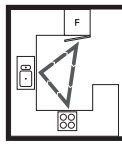
* Size excludes ensuite and walk-in wardrobe

LAYOUT OVERVIEW

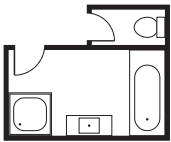
Home Layout:
L shape



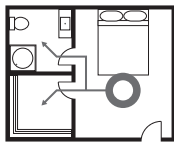
Kitchen Layout:
G shape integrated



Bath Layout:
Separate



Ensuite Layout:
Separate



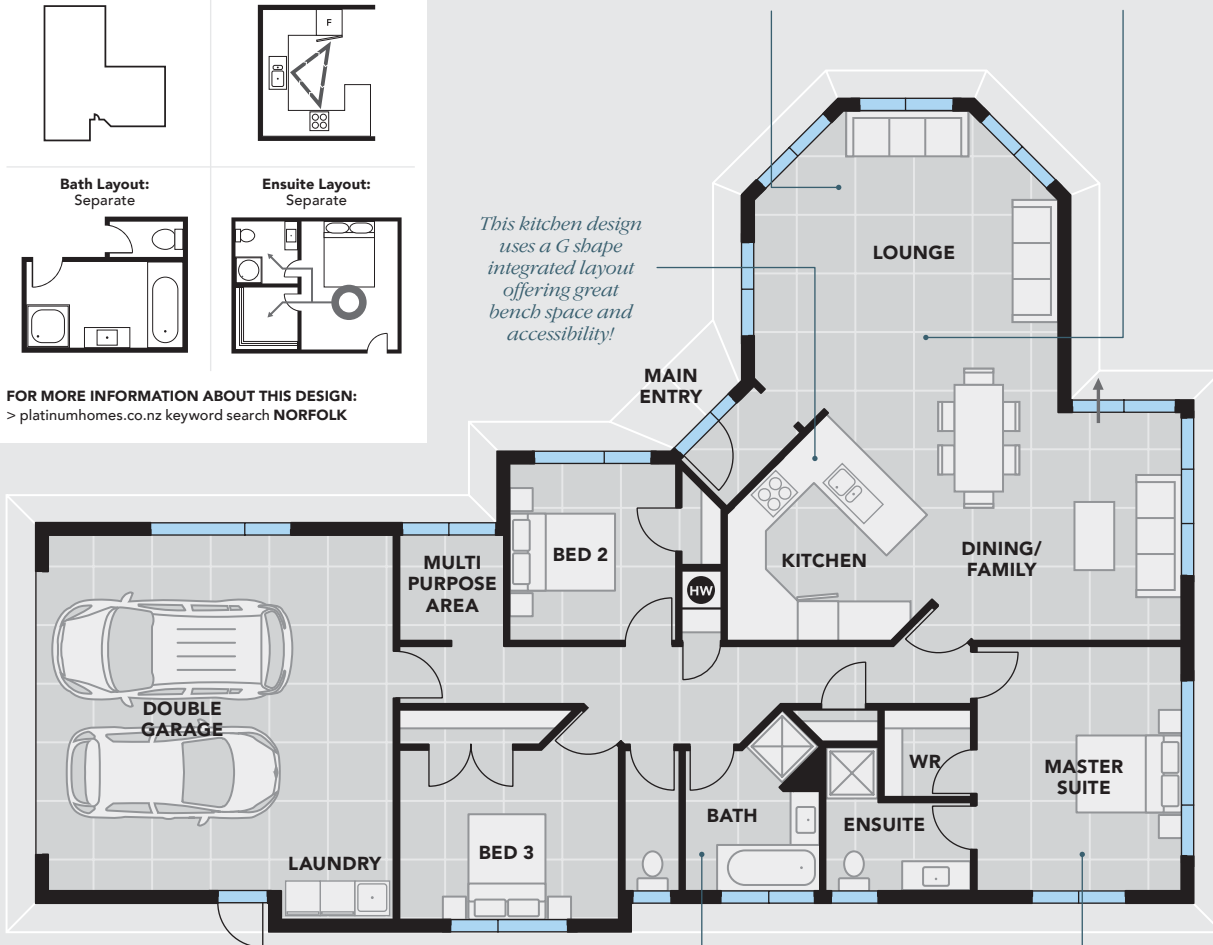
FOR MORE INFORMATION ABOUT THIS DESIGN:
> platinumhomes.co.nz keyword search **NORFOLK**

The design of the Norfolk is based on a L layout where one part of the home is set at a right angle to the other forming a L shape.

Spacious open plan living zones are perfect for entertaining and family events. Sliding doors off living zones allow indoor/outdoor access.

Semi-circular layout adds a unique architectural feature.

This kitchen design uses a G shape integrated layout offering great bench space and accessibility!



14.238m

19.78m

■ = 1 m² → = ACCESS

The bathroom design uses a separate layout in which the main toilet suite is separate from the rest of the bathroom. Practical if you have guests staying.

The master suite uses a separated layout breaking the area into three zones — sleeping, wardrobe and ensuite. Each space is a distinctly different space from the other.

Dimensions, images and floorplan are indicative only — not to scale. Floorplan ©2019 Platinum Design Ltd. — not to be reproduced without permission of the copyright holder.