

# MURIWAI

Beach Plan Series



*Everything Kiwis call home*



# MURIWAI



### DESIGN OVERVIEW

Floor Size (m<sup>2</sup>) **174**



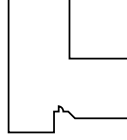
### APPROXIMATE ROOM SIZES (m)

<b>DINING</b>	3.4 x 4.2	<b>BEDROOM 2</b>	3.0 x 2.0
<b>LOUNGE</b>	4.8 x 4.5	<b>BEDROOM 3</b>	2.8 x 3.5
<b>GARAGE</b>	6.0 x 5.9	<b>STUDY</b>	2.0 x 2.8
<b>MASTER SUITE*</b>	3.5 x 3.4		

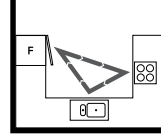
\* Size excludes ensuite and walk-in wardrobe

### LAYOUT OVERVIEW

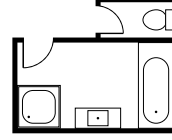
**Home Layout:**  
L shape



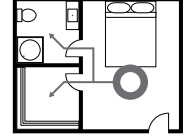
**Kitchen Layout:**  
U shape integrated



**Bath Layout:**  
Separate



**Ensuite Layout:**  
Separate

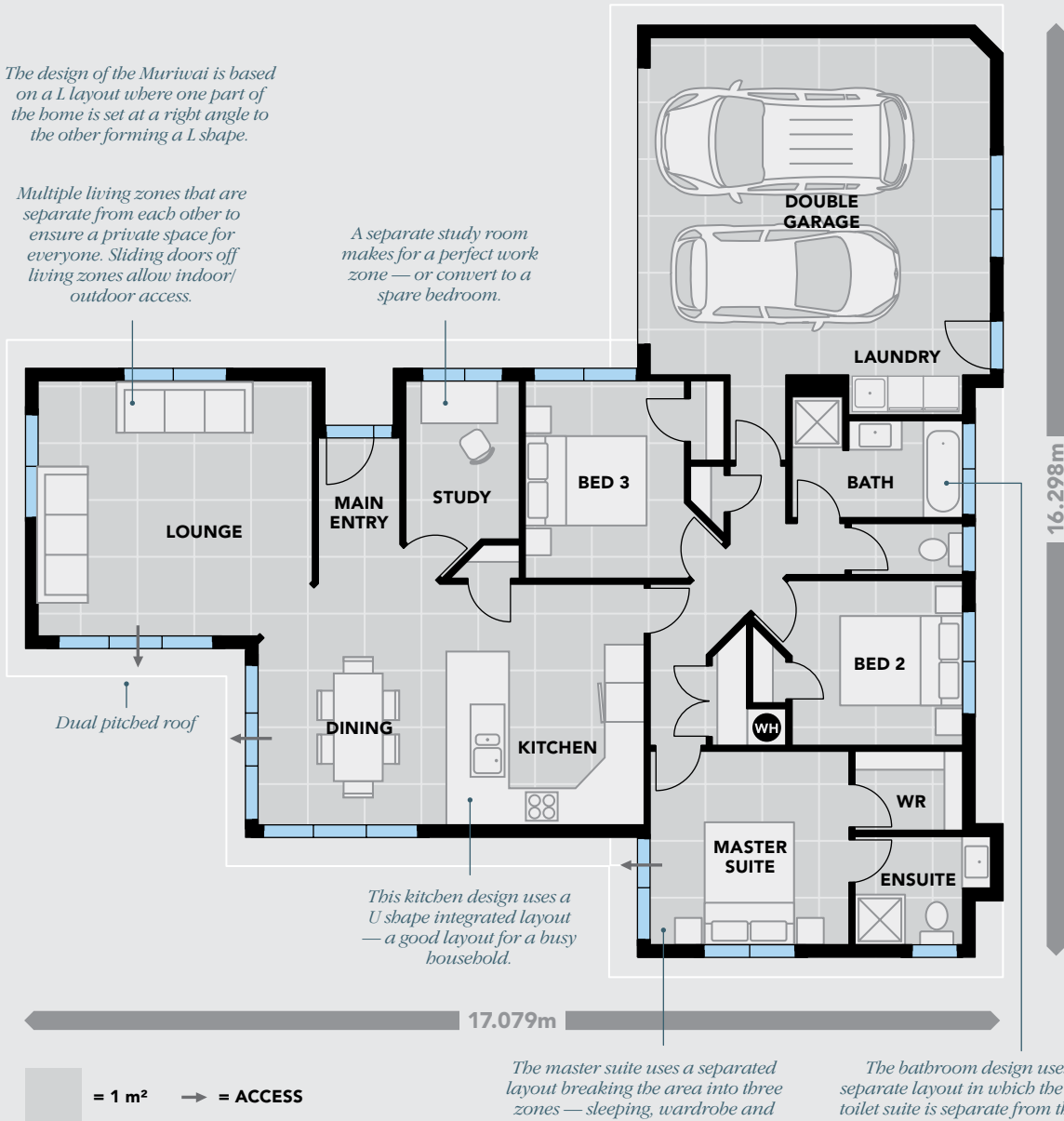


FOR MORE INFORMATION ABOUT THIS DESIGN: > platinumhomes.co.nz keyword search MURIWAI

The design of the Muriwai is based on a L layout where one part of the home is set at a right angle to the other forming a L shape.

Multiple living zones that are separate from each other to ensure a private space for everyone. Sliding doors off living zones allow indoor/outdoor access.

A separate study room makes for a perfect work zone — or convert to a spare bedroom.



Dual pitched roof

This kitchen design uses a U shape integrated layout — a good layout for a busy household.

The master suite uses a separated layout breaking the area into three zones — sleeping, wardrobe and ensuite. Each space is a distinctly different space from the other.

The bathroom design uses a separate layout in which the main toilet suite is separate from the rest of the bathroom. Practical if you have guests staying.

■ = 1 m<sup>2</sup> → = ACCESS

Dimensions, images and floorplan are indicative only — not to scale. Floorplan ©2019 Platinum Design Ltd. — not to be reproduced without permission of the copyright holder.