

DONNYBROOK

Alpha Plan Series



Everything Kiwis call home

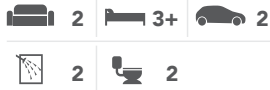


DONNYBROOK



DESIGN OVERVIEW

Floor Size (m²) **190**



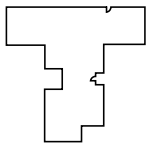
APPROXIMATE ROOM SIZES (m)

FAMILY/DINING	5.9 x 3.6
LOUNGE	4.9 x 5.1
GARAGE	5.9 x 6.0
MASTER SUITE*	3.5 x 3.9
BEDROOM 2	3.1 x 2.8
BEDROOM 3	3.0 x 3.3
STUDY	2.2 x 2.0

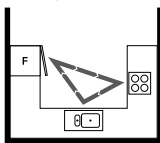
* Size excludes ensuite and walk-in wardrobe

LAYOUT OVERVIEW

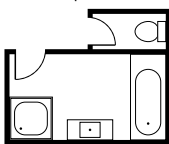
Home Layout:
T shape



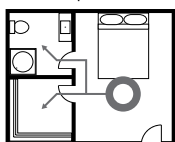
Kitchen Layout:
U shape integrated



Bath Layout:
Separate



Ensuite Layout:
Separate



FOR MORE INFORMATION ABOUT THIS DESIGN: > platinumhomes.co.nz
keyword search **DONNYBROOK**

■ = 1 m² → = ACCESS

The design of the Donnybrook is based on a T layout where one part of the home is set at a right angle forming a T shape.

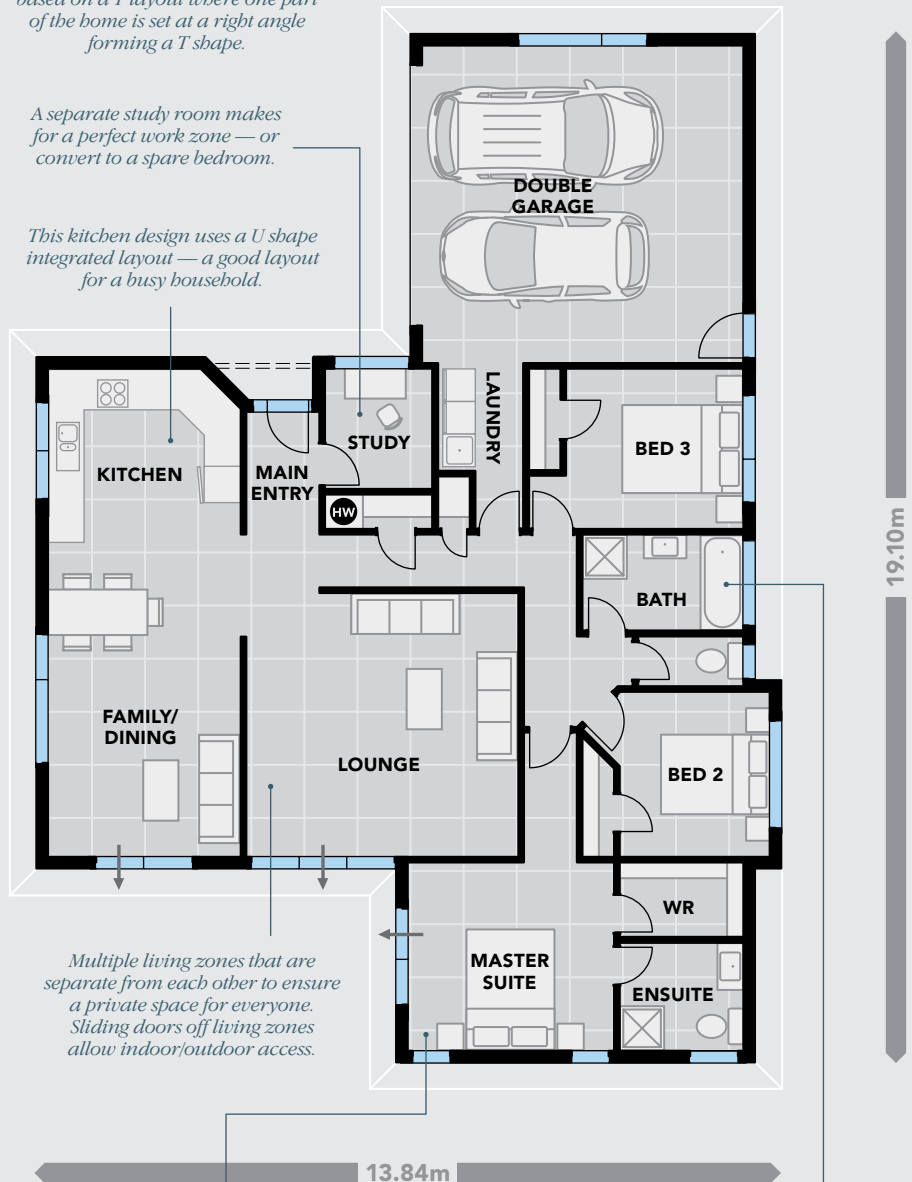
A separate study room makes for a perfect work zone — or convert to a spare bedroom.

This kitchen design uses a U shape integrated layout — a good layout for a busy household.

Multiple living zones that are separate from each other to ensure a private space for everyone. Sliding doors off living zones allow indoor/outdoor access.

The master suite uses a separated layout breaking the area into three zones — sleeping, wardrobe and ensuite. Each space is a distinctly different space from the other.

The bathroom design uses a separate layout in which the main toilet suite is separate from the rest of the bathroom. Practical if you have guests staying.



Dimensions, images and floorplan are indicative only — not to scale. Floorplan ©2019 Platinum Design Ltd. — not to be reproduced without permission of the copyright holder.