

# DOWNTON

□ Platinum Plan Series



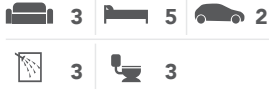
*Everything Kiwis call home*



# DOWNTON

**DESIGN OVERVIEW**

Floor Size (m<sup>2</sup>) **327**



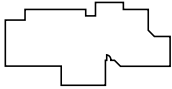
**APPROXIMATE ROOM SIZES (m)**

LOUNGE	5.4 x 5.0
FAMILY	4.9 x 5.0
DINING	5.0 x 5.6
GARAGE	6.0 x 6.2
MASTER SUITE*	5.4 x 4.2
GUEST BEDROOM*	3.4 x 4.3
BEDROOM 2	3.2 x 3.4
BEDROOM 3	3.9 x 3.3
BEDROOM 4	3.6 x 3.3

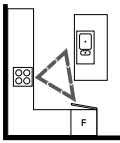
\* Size excludes ensuite and walk-in wardrobe

**LAYOUT OVERVIEW**

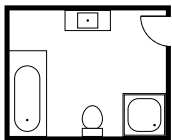
**Home Layout:**  
Central



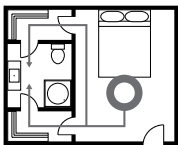
**Kitchen Layout:**  
L shape with island



**Bath Layout:**  
All in one



**Ensuite Layout:**  
Double walk through



**FOR MORE INFORMATION ABOUT THIS DESIGN:** > platinumhomes.co.nz keyword search **DOWNTON**

The design of the Downton is based on a central layout which flows from the kitchen/living area.

The master suite uses a double walk-through layout which separates the master suite into four zones. The ensuite is accessed via the his and the hers walk-through wardrobes.

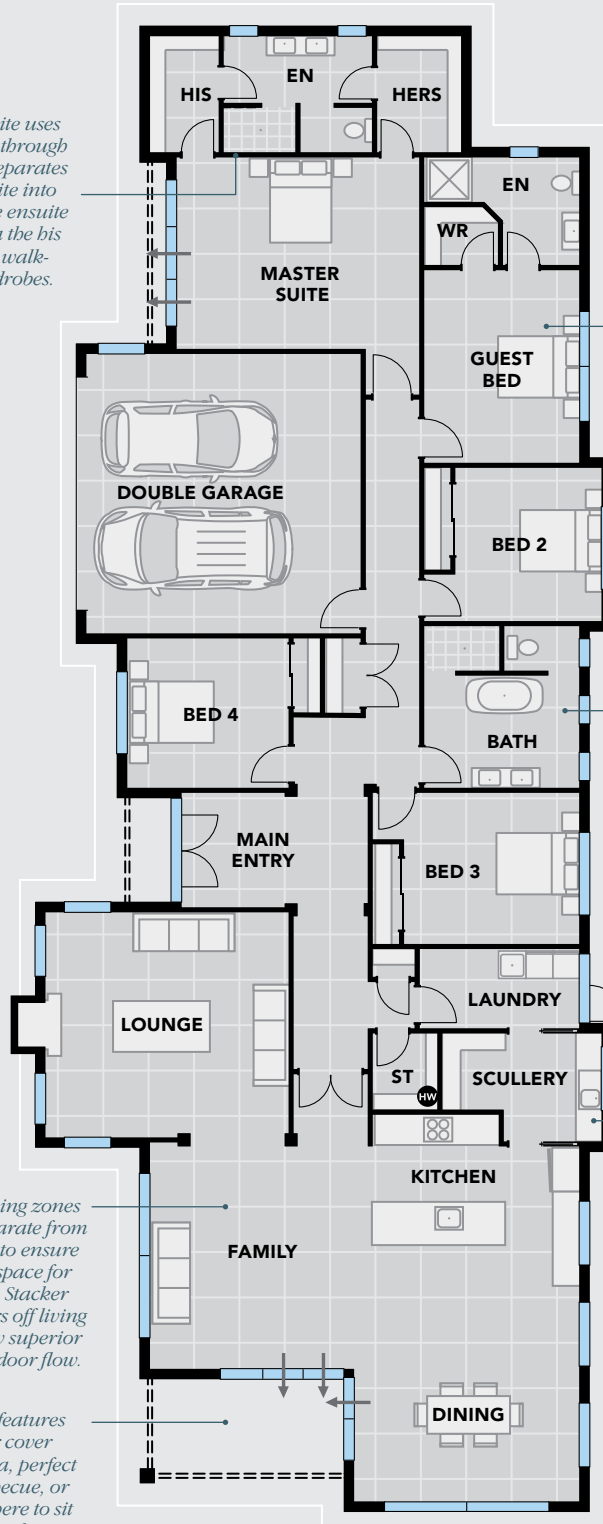
The guest bedroom uses a separated layout breaking the area into three zones — sleeping, wardrobe and ensuite. Each space is a distinctly different space from the other.

The bathroom design uses an all-in-one layout in which the bath, shower, toilet suite and vanity are in one room. Great use of space.

Multiple living zones that are separate from each other to ensure a private space for everyone. Slacker sliding doors off living zones allow superior indoor/outdoor flow.

This home features an under cover outdoor area, perfect for the barbecue, or just somewhere to sit in the shade.

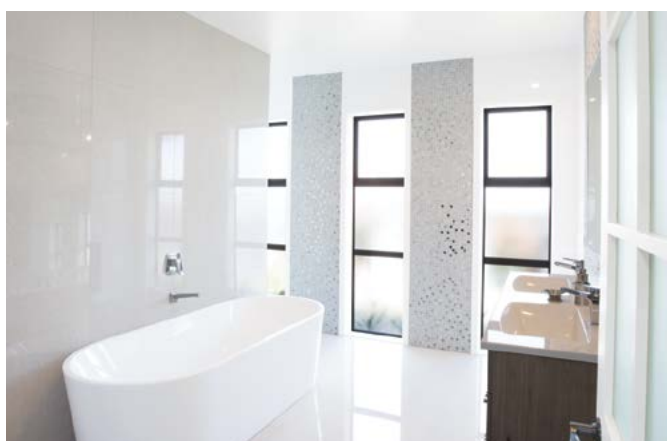
Cooking for a large group is easier with a walk-in scullery providing an additional sink and dish drawer. Fantastic for large families or rural living.



= 1 m<sup>2</sup> → = ACCESS

13.17m

32.722m



The **Platinum Homes Downton** is the perfect embodiment of contemporary home design combined with sweeping classic style. Starting at the entrance, which features a double door covered entry leading into a foyer area, everything about the Downton has been designed to impress. The expansive floorplan encompasses five double bedrooms—including a self-contained guest suite—a huge open plan kitchen / family / dining zone that opens out to an undercover outdoor area perfect for summer alfresco dining, whilst a semi-closed lounge provides the perfect evening retreat or TV room.

At the heart of this wonderful home is the beautifully appointed gourmet kitchen, which is facilitated by a walk-through scullery providing a second wet zone and extra storage. The conveniently positioned main bathroom features dual his/hers basin and walk-in tiled shower. The spacious master suite forms the perfect personal retreat with separate his and hers walk-through wardrobes leading to a luxury ensuite featuring dual basin, walk-in tiled shower plus separate water closet. There's storage aplenty with the double garage, separate walk-in storeroom and multiple cupboards positioned throughout. The Downton is undoubtedly an instant modern classic.

> Looking through the lounge to the living (above), the stunning kitchen featuring walk-through scullery (above left) and the main bathroom (left) with free-standing bath plus walk-in shower and WC (behind the wall).



# OUR PROMISE TO YOU

We believe we offer our customers the **best value home** for their budget, but we also know customers shop around! If you are offered what you believe to be the same specification as a Platinum Home at a better price from one of our competitors — bring us the **Building Contract** before you sign and we'll show you why we offer **better value!**

That's our promise to you.

Your Platinum Homes Consultant:

Showhomes nationwide  
0508 752 846  
[platinumhomes.co.nz](http://platinumhomes.co.nz)

*Everything Kiwis call home*

