

PIHA

Beach Plan Series



Everything Kiwis call home



DESIGN OVERVIEW

Floor Size (m²) **157**



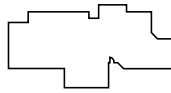
APPROXIMATE ROOM SIZES (m)

DINING	2.6 x 3.0	MASTER SUITE*	3.4 x 4.1
LOUNGE	4.8 x 5.5	BEDROOM 2	3.2 x 3.2
GARAGE	5.9 x 6.0	BEDROOM 3	2.7 x 3.2

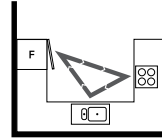
* Size excludes ensuite and walk-in wardrobe

LAYOUT OVERVIEW

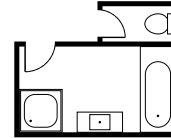
Home Layout:
Central



Kitchen Layout:
U shape integrated



Bath Layout:
Separate



FOR MORE INFORMATION ABOUT THIS DESIGN: > platinumhomes.co.nz keyword search **PIHA**

■ = 1 m² → = ACCESS

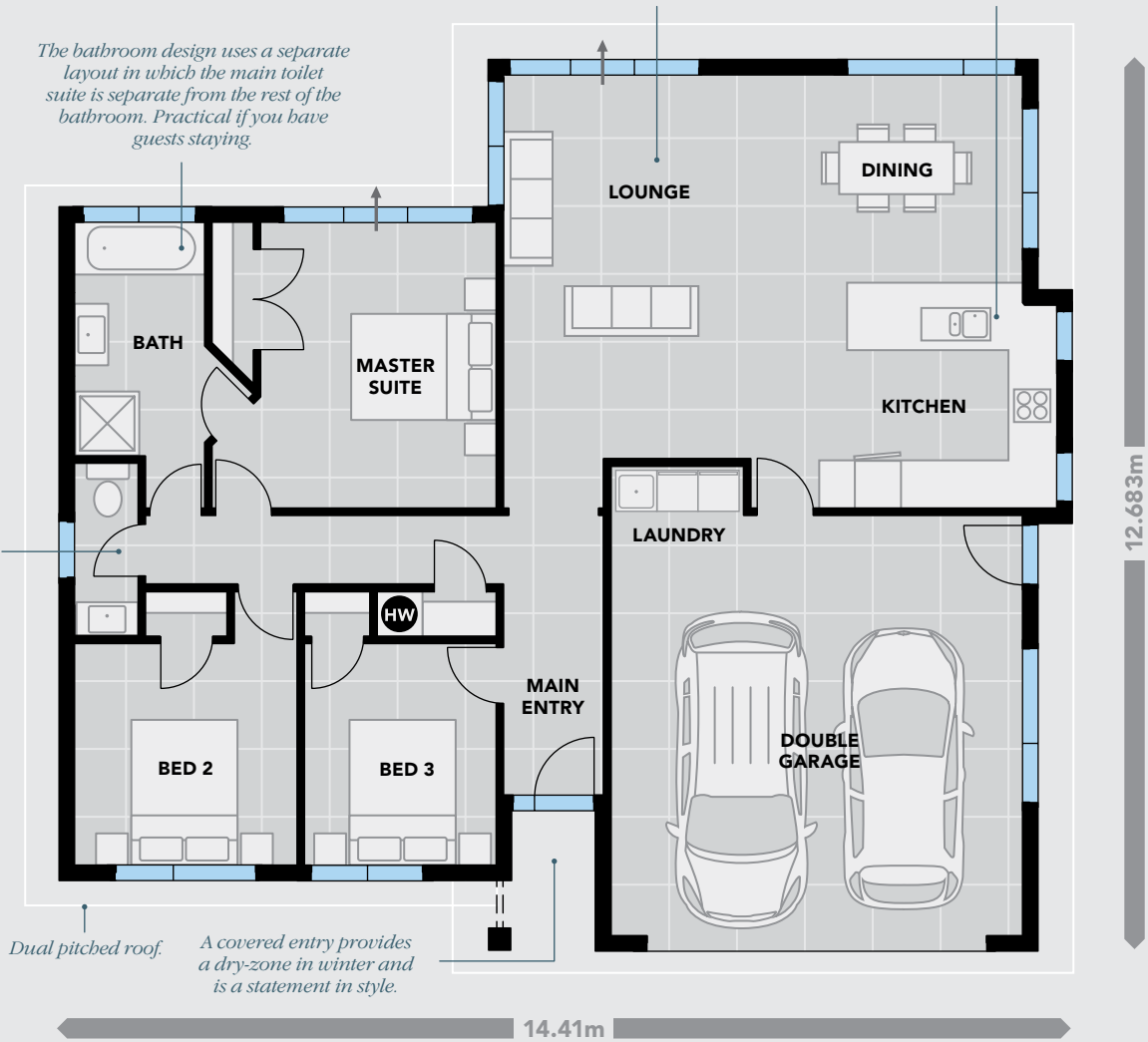
Spacious open plan living zones are perfect for entertaining and family events. Sliding door off living zone allow indoor/outdoor access.

The design of the Piha is based on a central layout which flows from the kitchen/living area.

This kitchen design uses a U shape integrated layout — a good layout for a busy household.

The bathroom design uses a separate layout in which the main toilet suite is separate from the rest of the bathroom. Practical if you have guests staying.

This design features the convenience of a separate toilet with hand basin.



Dual pitched roof.

A covered entry provides a dry-zone in winter and is a statement in style.

Dimensions, images and floorplan are indicative only — not to scale. Floorplan ©2019 Platinum Design Ltd. — not to be reproduced without permission of the copyright holder.