

KARAKA WATERS

■ Elevator Plan Series



Everything Kiwis call home



KARAKA WATERS

DESIGN OVERVIEW

Floor Size (m²) **256.41**



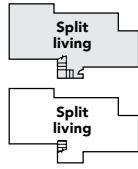
APPROXIMATE ROOM SIZES (m)

DINING	4.7 x 3.2	MASTER SUITE*	3.3 x 5.2
FAMILY	4.7 x 2.5	BEDROOM 2	2.9 x 3.2
LOUNGE	5.8 x 3.5	BEDROOM 3	3.6 x 3.6
GARAGE	5.8 x 6.0	BEDROOM 4	3.4 x 2.9

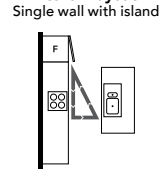
* Size excludes ensuite and walk-in wardrobe

LAYOUT OVERVIEW

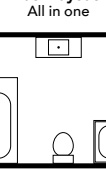
Two Level Layout:



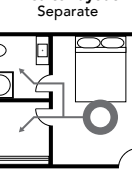
Kitchen Layout:



Bath Layout:

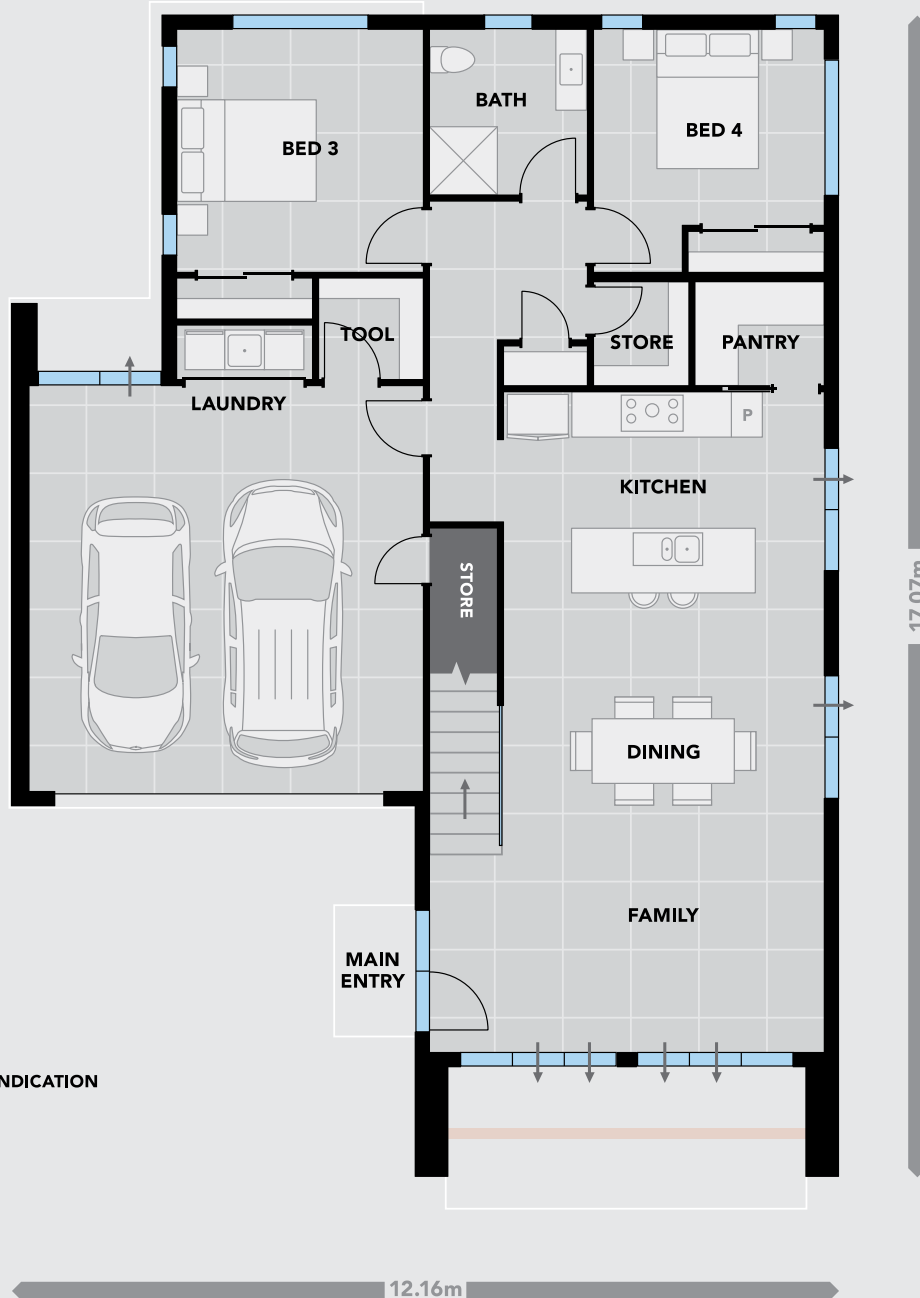


Ensuite Layout:



FOR MORE INFORMATION ABOUT THIS DESIGN: > platinumhomes.co.nz keyword search **KARAKA WATERS**

DOWNSTAIRS



- = 1 m²
- = NEXT LEVEL INDICATION
- = ACCESS

Platinum Homes are proud to present their fabulous new two-storey Showhome for you to enjoy. Loaded with the latest trendsetting features, they combine to give you standout appeal that you experience only with top-end homes but with a price aimed toward the more affordable end of the spectrum. The two-storey home demonstrates just how **Platinum Homes** can design a spacious four-bedroom, 3 bathroom home plus a large double garage which is provisioned for electric car charging. A designer brick profile plus a large north facing deck which flows seamlessly from the family dining room — giving you the impression of the inside floor incorporating the outside area ideal for outdoor relaxing.

Step inside and enjoy the high ceilings, designer kitchen, the very latest in Fisher and Paykel appliances, plus ultra stylish

Schneider Electrical switchgear. "Living is certainly designed to be easy." As you make your way up the wide staircase to the spacious foyer, you can't help but notice the natural light emitted from the large Velux skylights — the other two bedrooms and bathrooms which include the latest bathroom fittings plus a fabulous stand-alone egg-shaped bath. The north-facing lounge at the front of the home incorporates a high raked ceiling plus large windows to give you the ability to see forever. Do yourself a favour... if you are looking at building a home with a ton of character, materials from New Zealand's best and built by one of New Zealand's top 10 building companies who's reputation is renowned for delivering superior quality the latest **Platinum home at Karaka Waters** is a must-see.





OUR PROMISE TO YOU

We believe we offer our customers the best value home for their budget, but we also know customers shop around! If you are offered what you believe to be the same specification as a Platinum Home at a better price from one of our competitors — bring us the Building Contract before you sign and we'll show you why we offer better value!

That's our promise to you.

Your Platinum Homes Consultant:

Showhomes nationwide
0508 752 846
platinumhomes.co.nz

Everything Kiwis call home

