

RIVIERA

■ Platinum Plan Series



Everything Kiwis call home



RIVIERA

DESIGN OVERVIEW

Floor Size (m²) **360**



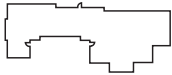
APPROXIMATE ROOM SIZES (m)

DINING	4.3 x 3.2
FAMILY	4.9 x 4.7
LOUNGE	3.6 x 5.2
GUEST WING	4.2 x 4.3
MAIN GARAGE	5.9 x 5.8
SINGLE GARAGE	3.5 x 6.6
MASTER SUITE*	3.8 x 4.8
BEDROOM 2	3.0 x 3.4
BEDROOM 3	3.0 x 3.4
BEDROOM 4	2.9 x 3.4
BEDROOM 5	3.0 x 2.8
BEDROOM 6	3.0 x 3.2
BEDROOM 7	3.0 x 2.5

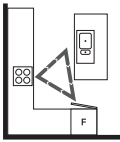
* Size excludes ensuite and walk-in wardrobe

LAYOUT OVERVIEW

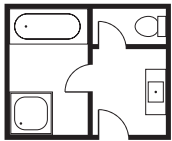
Home Layout:
Expansive



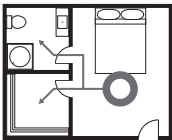
Kitchen Layout:
L shape with island



Bath Layout:
Three way



Ensuite Layout
Separate



FOR MORE INFORMATION ABOUT THIS DESIGN: > platinumhomes.co.nz keyword search RIVIERA

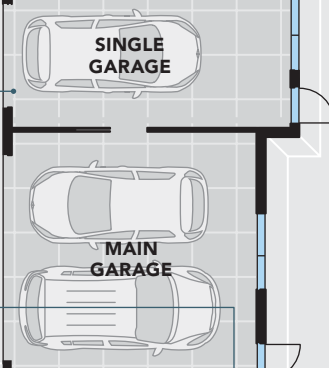
The guest wing features separate covered entry, two bedrooms and a bathroom.

The design of the Riviera is based on an expansive layout in which there are more than one distinct dwelling zones.



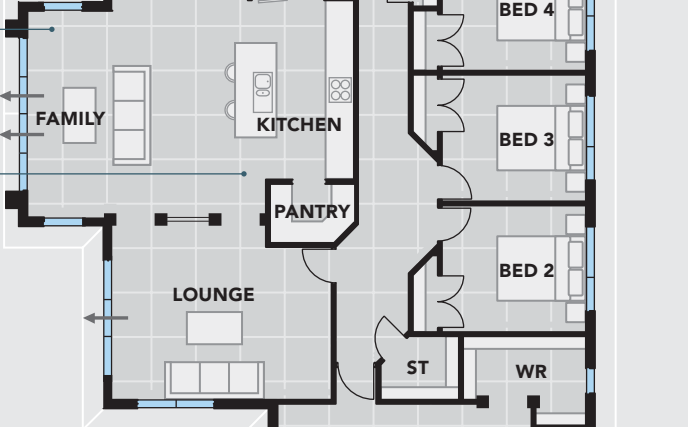
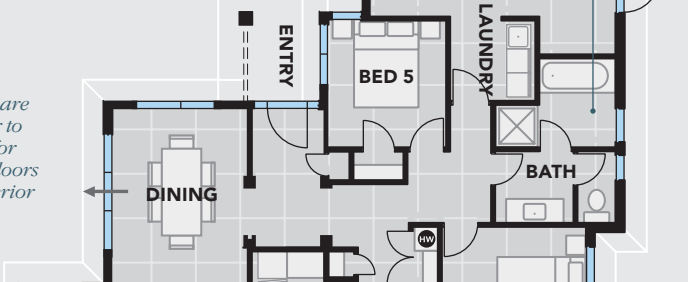
A huge triple garage provides ample storage for all the toys!

The bathroom design uses a three-way layout in which the bath and shower, toilet suite and vanity sit in separate interconnecting rooms. Practical for a family that shares the space.

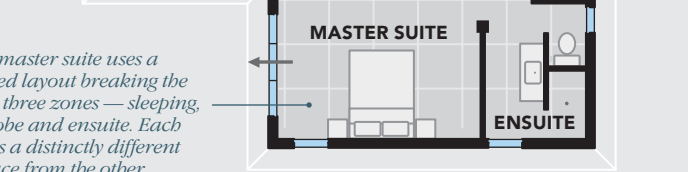


Multiple living zones that are separate from each other to ensure a private space for everyone. Stacker sliding doors off living zones allow superior indoor/outdoor flow.

The kitchen design uses a L shape with island bench layout — easy access and very practical! The inclusion of a separate walk-in pantry ensures plenty of storage space and doubles as a food preparation area when the need arises!



The master suite uses a separated layout breaking the area into three zones — sleeping, wardrobe and ensuite. Each space is a distinctly different space from the other.



36.88m

= 1 m² → = ACCESS

15.40m



If it's style, functionality and space you're looking for, you'll fall in love with **Platinum Homes® Riviera**. From its high stud entrance through its open dining and family room area to its modern kitchen, this home speaks quality. With five generous bedrooms in the main house, three-car garaging and a private guest wing (attached for ease of access). The kitchen area is simply stunning with the island bench layout making cooking a pleasure. A full walk-in pantry adds ample storage whilst spacious dining/family and lounge areas mean there is room in abundance for everyone. The master bedroom is finished to a very high level with an ensuite featuring walk-in tiled shower and large walk-in wardrobe. Ranch sliders throughout this home allow indoor/outdoor access at your convenience. Built for the sun, it is inviting on the outside and warm and light on the inside.



> The kitchen (above), ensuite (above left) and living room (left) of the **Platinum Series RIVIERA**.



OUR PROMISE TO YOU

We believe we offer our customers the **best value home** for their budget, but we also know customers shop around! If you are offered what you believe to be the same specification as a Platinum Home at a better price from one of our competitors — bring us the **Building Contract** before you sign and we'll show you why we offer **better value!**

That's our promise to you.

Your Platinum Homes Consultant:

Showhomes nationwide
0508 752 846
platinumhomes.co.nz

Everything Kiwis call home

